

Document Management System



INTRODUCTION

MapleCloud Technologies Document Management System is the ideal solution for businesses seeking to optimize their document management processes, enhance productivity, and ensure data security and compliance. With its advanced features, intuitive interface, and seamless integration capabilities, MapleCloud Technologies DMS empowers organizations to thrive in the digital landscape. By adopting MapleCloud Technologies DMS, businesses can streamline operations, save costs, promote sustainability, and foster collaboration. Thank you for your attention, and we are excited to address any questions you may have about MapleCloud Technologies DMS.

Document Management System (DMS) by MapleCloud Technologies. Businesses must find a simplified and safe management solution for the massive amount of papers and information they must deal with in this digital age.

The MapleCloud Technologies DMS provides a robust and user-friendly platform for effectively recording, organizing, and accessing documents.

Let's examine the main characteristics, advantages, recommended methods for installation, and special features of MapleCloud Technologies DMS.





KEY COMPONENTS OF DMS

MapleCloud Technologies DMS is a cutting-edge software solution designed to enhance document management processes for businesses of all sizes. It leverages advanced technology to offer a wide range of features that simplify document handling and foster collaboration. Let's take a closer look at the key components of MapleCloud Technologies DMS:

- **Document Capture:** MapleCloud Technologies DMS allows seamless document capture through various channels, including scanning, electronic forms, email integration, and direct uploads.
- **Centralized Storage and Organization:** All documents are securely stored in a centralized repository, organized into customizable folders and subfolders. The system employs metadata tagging for effortless categorization and quick retrieval.
- **Version Control:** MapleCloud Technologies DMS maintains a comprehensive version history of documents, enabling users to track changes, view revisions, and revert to previous versions if needed.
- **Security and Access Control:** Security is a top priority for MapleCloud Technologies DMS. It employs robust access control measures, encryption protocols, and audit trails to ensure documents are accessible only to authorized personnel.
- **Intelligent Search and Retrieval:** The DMS features an intelligent search function, allowing users to quickly locate documents using keywords, metadata, or content-based searches, significantly reducing time spent on document retrieval.
- **Workflow Automation:** MapleCloud Technologies DMS streamlines business processes with customizable workflow automation. It enables automatic document routing, approvals, and notifications, optimizing productivity and minimizing manual tasks.
- **Real-time Collaboration:** Users can collaborate in real-time on documents, making edits, leaving comments, and engaging in discussions, promoting efficient teamwork and decision-making.
- **Seamless Integration:** The DMS seamlessly integrates with other business applications and systems, including CRM, ERP, and cloud storage platforms, ensuring smooth data exchange and an interconnected workflow.

BENEFITS OF MCTDMS

The adoption of MapleCloud Technologies DMS offers numerous advantages to businesses, including:

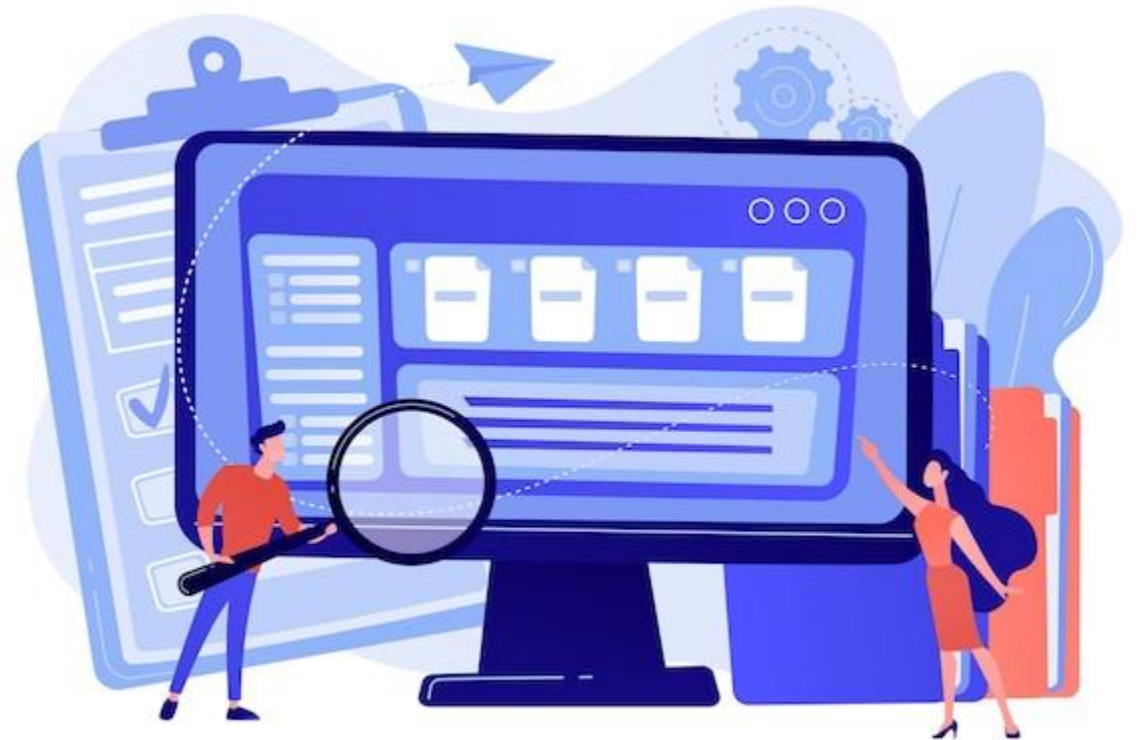
- **Enhanced Productivity:** The intuitive interface and powerful search capabilities enable quick access to information, reducing the time spent on manual document handling.
- **Cost Savings:** Transitioning to a paperless environment leads to reduced paper usage, printing costs, and physical storage expenses.
- **Heightened Security and Compliance:** MapleCloud Technologies DMS ensures data security, compliance with industry regulations, and protection against unauthorized access, safeguarding sensitive information.
- **Disaster Recovery:** Automatic backups and redundant storage mechanisms safeguard documents from potential data loss due to system failures or unforeseen disasters.
- **Eco-Friendly Initiatives:** By reducing paper consumption, MapleCloud Technologies DMS contributes to environmental sustainability, aligning with corporate social responsibility goals.



BEST PRACTICES FOR IMPLEMENTING MCTDMS

To maximize the benefits of MapleCloud Technologies DMS, businesses should follow these best practices during the implementation process:

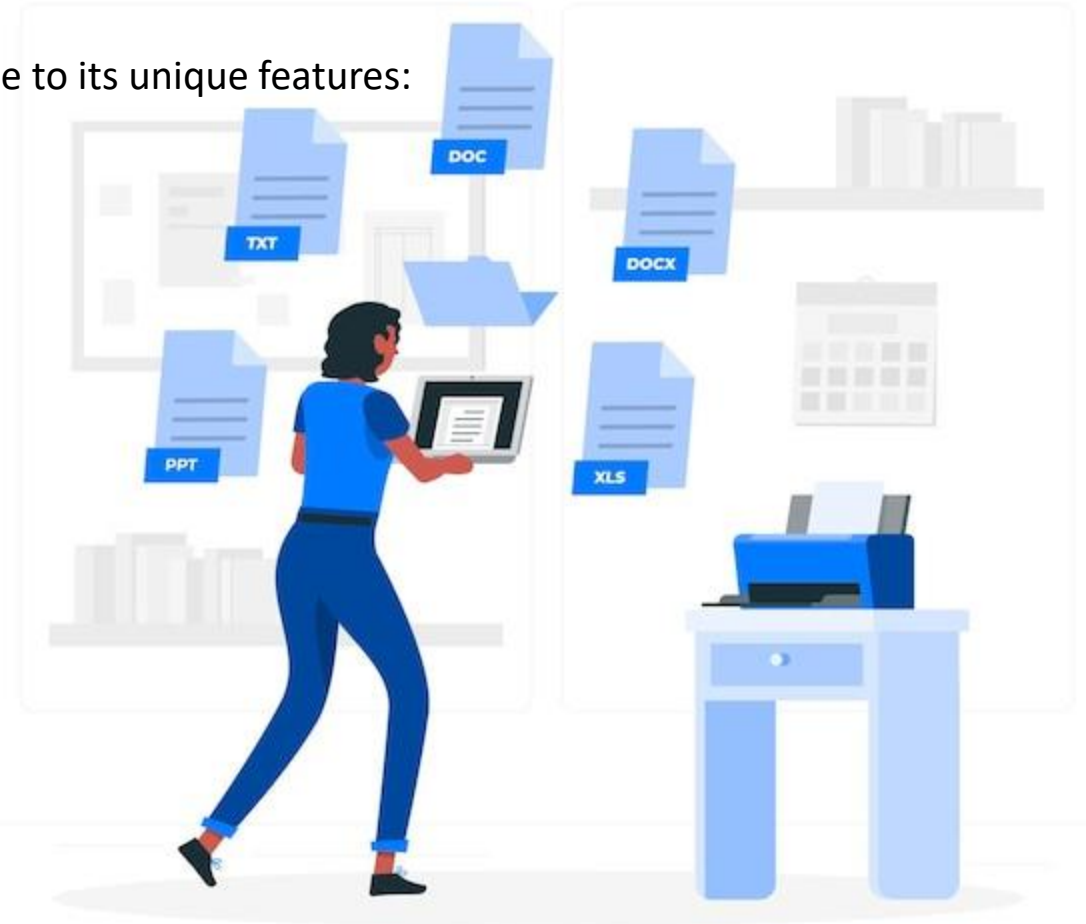
- **Needs Assessment:** Conduct a comprehensive assessment of the organization's document management requirements and workflows to ensure that MapleCloud Technologies DMS aligns with specific needs.
- **Thorough User Training:** Provide comprehensive training to all users, including administrators and employees, to promote seamless adoption and optimal utilization of the DMS.
- **Data Migration Strategy:** Develop a structured data migration plan to transfer existing documents and information to MapleCloud Technologies DMS accurately and efficiently.
- **Security Implementation:** Implement robust security measures to protect sensitive data, including data encryption, user access controls, and regular security audits.
- **Continuous Support and Updates:** Ensure ongoing support and regular updates from MapleCloud Technologies to keep the DMS up-to-date and functioning optimally.

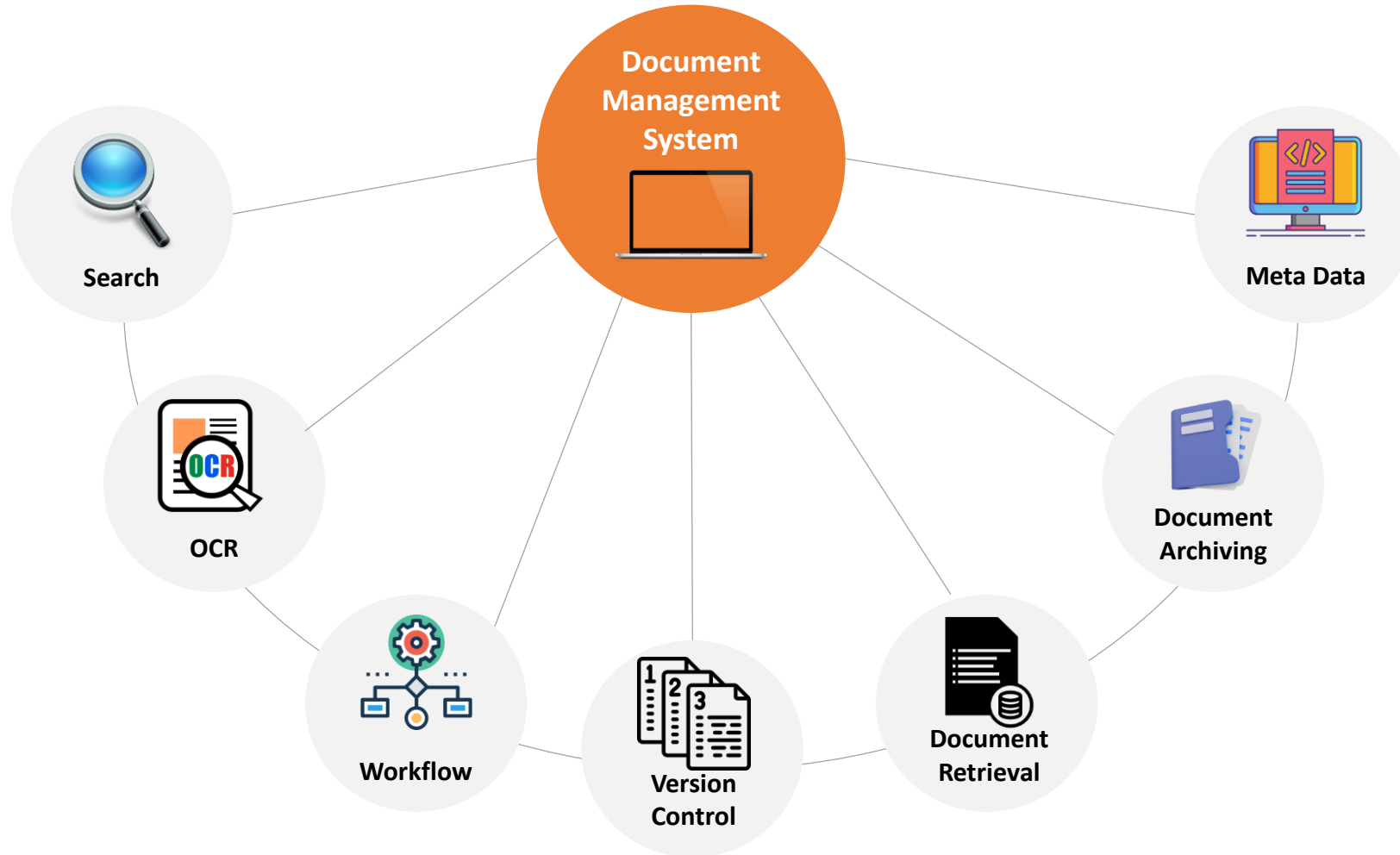


FEATURES OF MCTDMS

MapleCloud Technologies DMS stands out from the competition due to its unique features:

- **Advanced AI-Powered Search:** The DMS incorporates cutting-edge AI technology for smart and context-aware document searches, making it easier to find relevant information.
- **Intuitive Mobile App:** MapleCloud Technologies DMS offers a user-friendly mobile app, enabling access to documents on-the-go, promoting flexibility, and enhancing productivity.
- **Customizable Workflows:** The DMS provides highly customizable workflow automation, tailored to fit specific business processes, resulting in seamless and efficient operations.
- **Scalability:** MapleCloud Technologies DMS is designed to scale effortlessly as the organization grows, accommodating increased document volumes and user demands.







DMS ARCHITECTURE



THANKS!

DO YOU HAVE ANY
QUESTIONS?

fly@maplecloudtechnologies.com

+918178803636

www.maplecloudtechnologies.com